

ROYAL *Variset*

Tool Management Systems

Royal's
Renowned Quality
with Front Working
Technology

2FVP 420/200
2FVP 620/200
2FVP 1020/200



See back for gauge specifications

ROYAL *Variset*

Tool Management Systems

Royal Design & Manufacturing Inc.
32401 Stephenson Highway
Madison Heights, Michigan 48071
PH: (248) 588-0110 FX: (248) 588-5930
www.variset.com
ISO-9001 Registered

Your Local Sales Representative:

Technical Data	Model: 2FVP620/200
Tool Length Max.	5-620mm (420mm & 1020 mm options)
Tool Diameter Max.	400mm
Operation	X/Z Full Automatic - Optional Full CNC 3 Axis
Measurement Resolution	.0001"/0.001mm
Height x Width x Depth	83"H X 60"W X 35"D



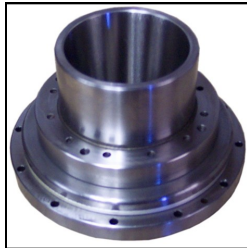
22" LCD display & user friendly interface

Standard Features:

- Front working design allows optimal tool adjustment for improved quality and throughput
- PC-controlled with MS-Windows 7 Professional
- Heavy duty construction
 - Suitable for factory environment
 - Cast iron base for structural integrity
 - Precision pre-loaded vee-roller slides
 - Backlash free linear drive nuts
- Linear encoders for precision positioning
- Access for rear adjust tooling
- High resolution vision system
- Joystick control for manual X and Z axis positioning
- Gage travels are laser inspected and certified
- Final inspection includes a system R & R to AIAG guidelines



X & Z axis controller



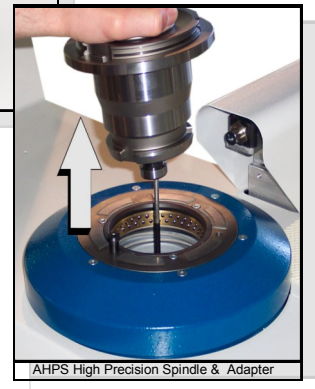
Standard ISO50 YRT80 Bearing Spindle

Options:

- 50-1020mm range column
- Tooling adapters (standard and specials)
- Fully enclosed Variset cabinet with optional door for overhead loading
- Retention knob clamping
- Full CNC 3rd axis (3FVP) with auto-focus / radial positioning.
- AHPS High Precision spindle with interchangeable spindle adapters and pneumatic clamping: ISO tapered shanks, HSK, ABS, and others
- Printers for labels or reports
- Gage benches
- Tool disassembly fixtures
- Royal Variset software for tool management.
- Communication with various networks, machine controls, etc.



Disassembly Fixture



AHPS High Precision Spindle & Adapter

Royal Design & Manufacturing Inc.

32401 Stephenson Highway
 Madison Heights, Michigan 48071
 United States
 PH: (248) 588-0110 FX: (248) 588-5930
 www.variset.com
 ISO-9001 Registered

Royal Tool Control Ltd.

1 Amberley Court,
 Bold Street,
 Sheffield, England
 S9 2LQ
 PH:+44(0)114244 1411 FX:+44(0)1142432247
 www.royaltool.co.uk